

RNAV (GNSS, VOR/DME) OVERLAY STANDARD DEPARTURE CHART INSTRUMENT (SID) - ICAO

TRANSITION ALT 5000

TWR	124.205
ATIS	118.505
	129.055

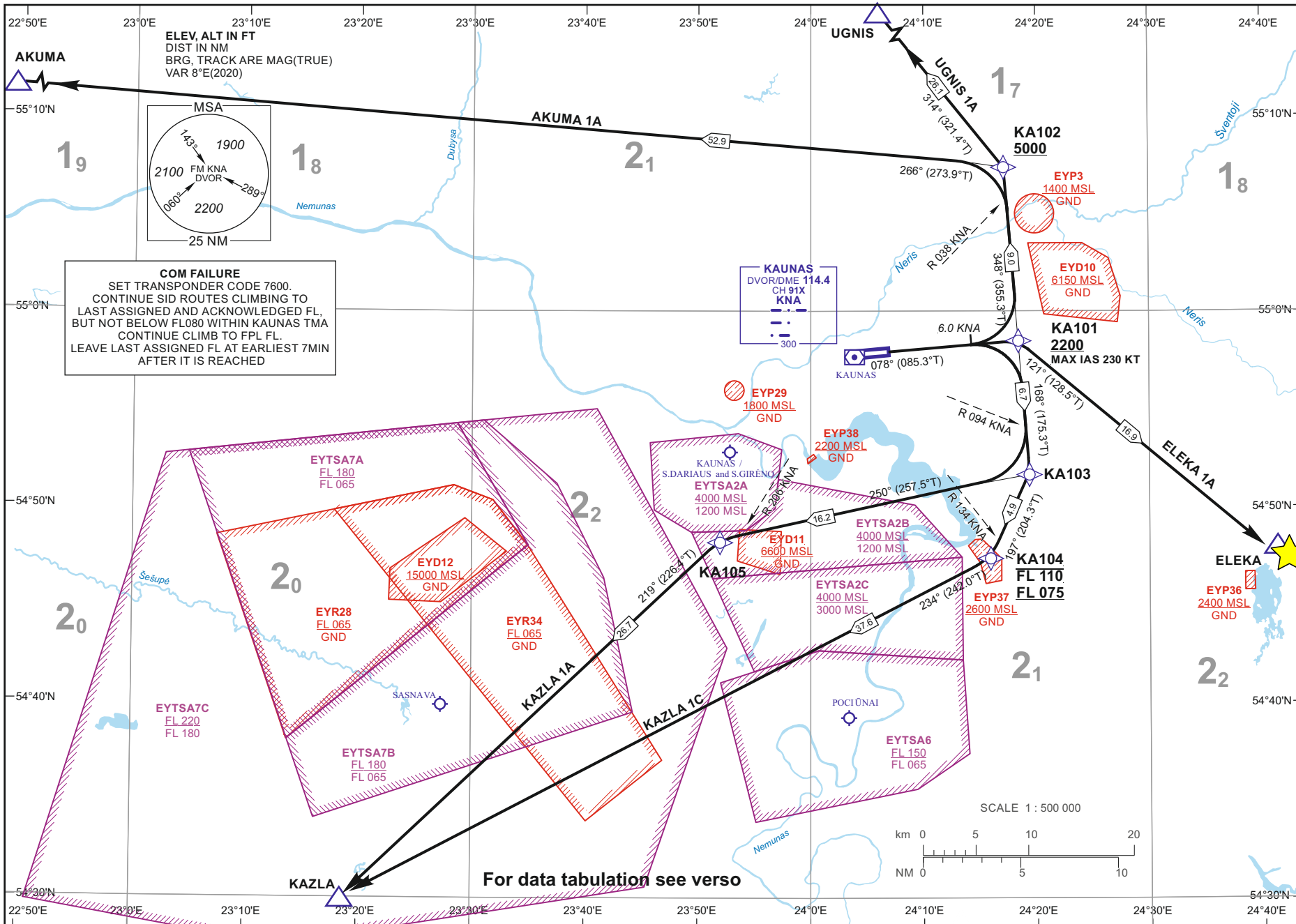
KAUNAS
RWY 08
 AKUMA 1A, ELEKA 1A,
 KAZLA 1A, KAZLA 1C, UGNIS 1A

Changes: EYP36, EYP37 and EYP38 added.

24 FEB 2022

©2019 ORO NAVIGACIJA

AIRAC AMDT 001/2022



KAUNAS

RNAV (GNSS, VOR/DME) OVERLAY

SID RWY 08

TABULAR DESCRIPTION

STANDARD INSTRUMENT DEPARTURE (SID) ROUTES

SID NAME	ROUTE
AKUMA 1A	Climb on course 078° to KNA DME 6.0 NM, then turn left on track 348°. Cross R-038 KNA (at 5000 FT MSL or above), turn left on track 266° and proceed to AKUMA.
ELEKA 1A	Climb on course 078° to KNA DME 6.0 NM, then turn right on track 121° and proceed to ELEKA.
KAZLA 1A	Climb on course 078° to KNA DME 6.0 NM, then turn right on track 168°. Cross R-094 KNA, turn right on track 250°. Cross R-206 KNA, turn left on track 219° and proceed to KAZLA.
KAZLA 1C	Climb on course 078° to KNA DME 6.0 NM, then turn right on track 168°. Cross R-094 KNA, turn right on track 197°. Cross R-134 (block level FL075 - FL110*), turn right on track 234° and proceed to KAZLA.
UGNIS 1A	Climb on course 078° to KNA DME 6.0 NM, then turn left on track 348°. Cross R-038 KNA (at 5000 FT MSL or above), turn left on track 314° and proceed to UGNIS.

RNAV SID WAY POINT CODING (All segments from KA101 – TF legs)

SID NAME	ROUTE
AKUMA 1A	KA101[A2200+; K230-] - KA102[A5000+] - AKUMA
ELEKA 1A	KA101[A2200+; K230-] - ELEKA
KAZLA 1A	KA101[A2200+; K230-] - KA103 - KA105 - KAZLA
KAZLA 1C	KA101[A2200+; K230-] - KA103 - KA104[F075+;F110-*] - KAZLA
UGNIS 1A	KA101[A2200+; K230-] - KA102[A5000+] - UGNIS

Remark: 1. After take-off climb to 4000 FT MSL. Unless otherwise specified by ATC.
 2. Aircraft proceeding on SID shall use PDG 6.6% (400 FT/NM) up to 4000 FT MSL.
 Aircraft unable to conform with this procedure shall inform ATC accordingly.

Note: *Unless otherwise instructed by ATC

WAYPOINT COORDINATES		
FIX/POINTS	COORDINATES	RADIAL/DISTANCE
KA101	54 58 28.9N 024 18 25.7E	KNA R076.5/D8.4
KA102	55 07 26.3N 024 17 08.3E	KNA R030.0/D12.4
KA103	54 51 46.7N 024 19 23.6E	KNA R115.7/D10.6
KA104	54 47 21.6N 024 15 55.8E	KNA R138.5/D12.4
KA105	54 48 19.8N 023 52 00.7E	KNA R209.2/D11.6
AKUMA	55 11 37.8N 022 45 10.6E	KNA R280.2/D47.4
ELEKA	54 48 01.6N 024 41 20.1E	KNA R106.2/D23.6
KAZLA	54 29 59.3N 023 18 33.8E	KNA R216.3/D38.2
UGNIS	55 27 50.9N 023 48 44.5E	KNA R336.5/D31.5
KNA	54 57 37.4N 024 03 59.1E	

FOR DETAILED FLIGHT PROCEDURES REFER TO AIP EYKA AD 2.22

Changes: radial from KNA and BRG of SID's; REP KA5-- renamed to KA1--; KA102 coordinates; remark.